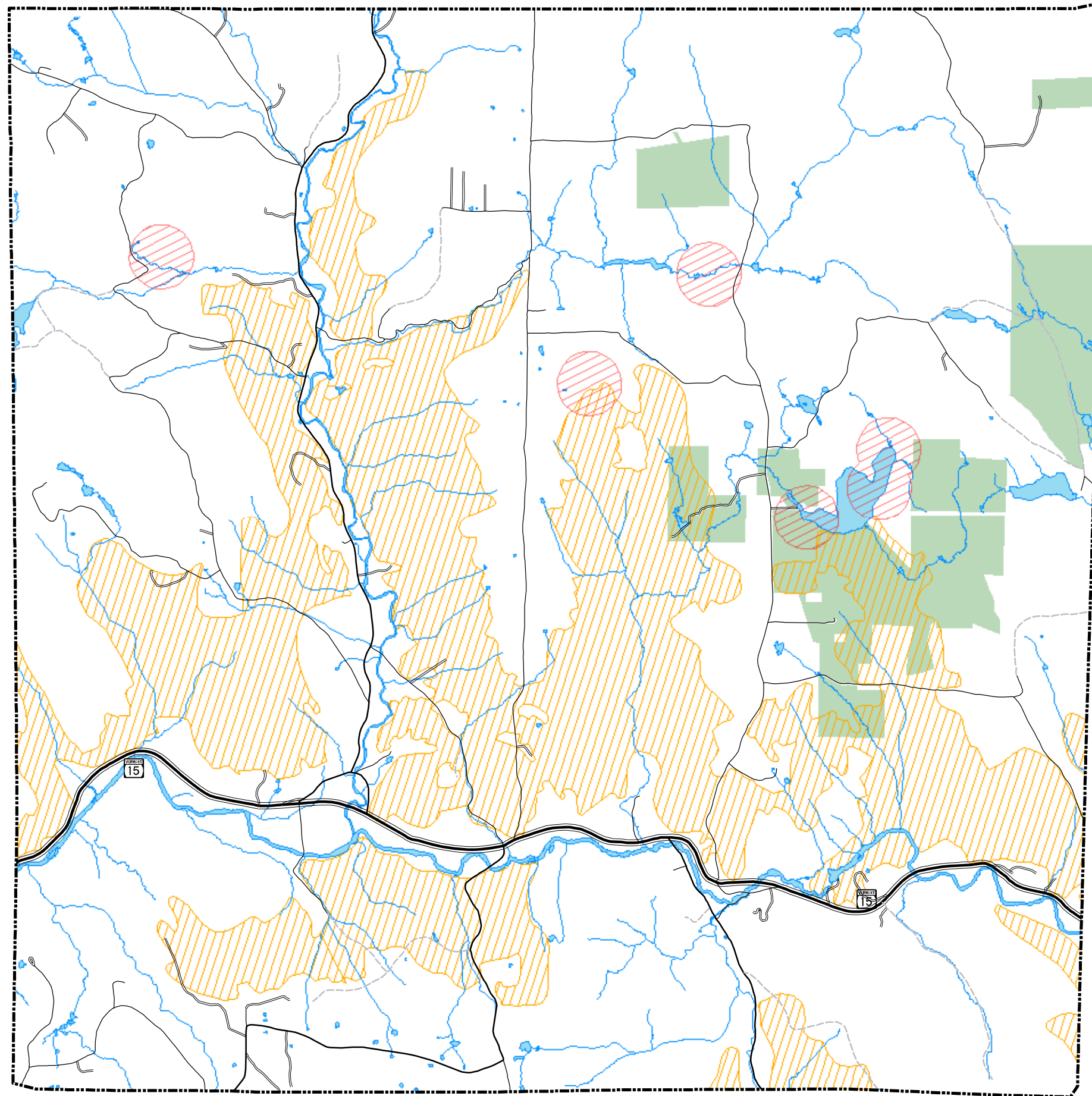
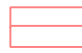


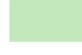



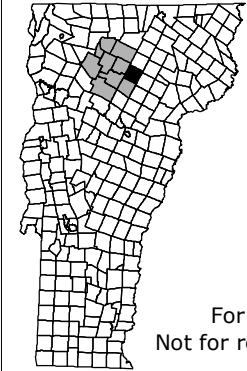
Critical Habitat Map

Wolcott, Vermont
Town Plan




-  Endangered Plant/Animal Site
-  Stream
-  Lake/River
-  Public Land
-  Deer Wintering Yard


SOURCES:
POLITICAL BOUNDARIES: 1:24000 USGS Quadrangles, VCGI, 1991.
ROADS: 1:5000 E-911 Road Data, 2004.
SURFACE WATER: On-screen digitized from 1:5000 digital orthophotos using USGS 7 1/2' quadrangles and 1:20000 color infrared aerial photography as additional source material, VCGI for VHD-USGS, 2001.
PUBLIC CONSERVATION LANDS: Vermont Conserved Lands Database Project, 1:5000, UVM-SAL, LCPC, 2004.
VSWI WETLANDS: Please note- These data include both NWI wetlands and VANR Class II wetlands. USFWS used 1:80000 color infrared aerial photos (flown between 1975 and 1978), USGS topo sheets and other mapped and text data to interpret locations. 3 acre mapping unit with includes a 50' buffer. VANR updated as of 1996. Refer to the VANR-DEC, Water Quality Division, Wetlands Section for official wetlands determinations. (802) 241-3770.
RARE PLANT/ANIMAL SITES: Rare, Threatened and Endangered Species & Significant Communities, 1:24000, Includes 200m buffer. Vermont Nongame and Natural Heritage Program, VANR, 1997.
DEER WINTERING AREAS: 1:24000 and 1:25000, VANR, 1994.



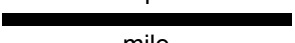
Traverse Mercator,
VT State Plane,
Meters, NAD83



For planning purposes only.
Not for regulatory interpretation.



1:42,000



1
mile

Lamoille County
Planning Commission
GIS Service Center
Municipal Planning

LCPC
632 LaPorte Road
Morrisville, VT 05661
802.888.4548 f 802.888.6938
karyl@lpcvt.org
www.lpcvt.org
KMF 6/20/2007